

Alite™ 27 | LIBERTYLINK®
Herbicide | **GT27™**

Recharge your residual.

Elite Genetics. Alite Weed Control.

 **BASF**

We create chemistry

A New Residual Site of Action for Soybeans

Recharge your soybean herbicide preemergence program with Alite™ 27 herbicide — powered by the LibertyLink® GT27™ soybean performance system. Alite 27 herbicide amps up the performance of your traditional preemergence soybean program by providing a new, unique site of action that delivers:

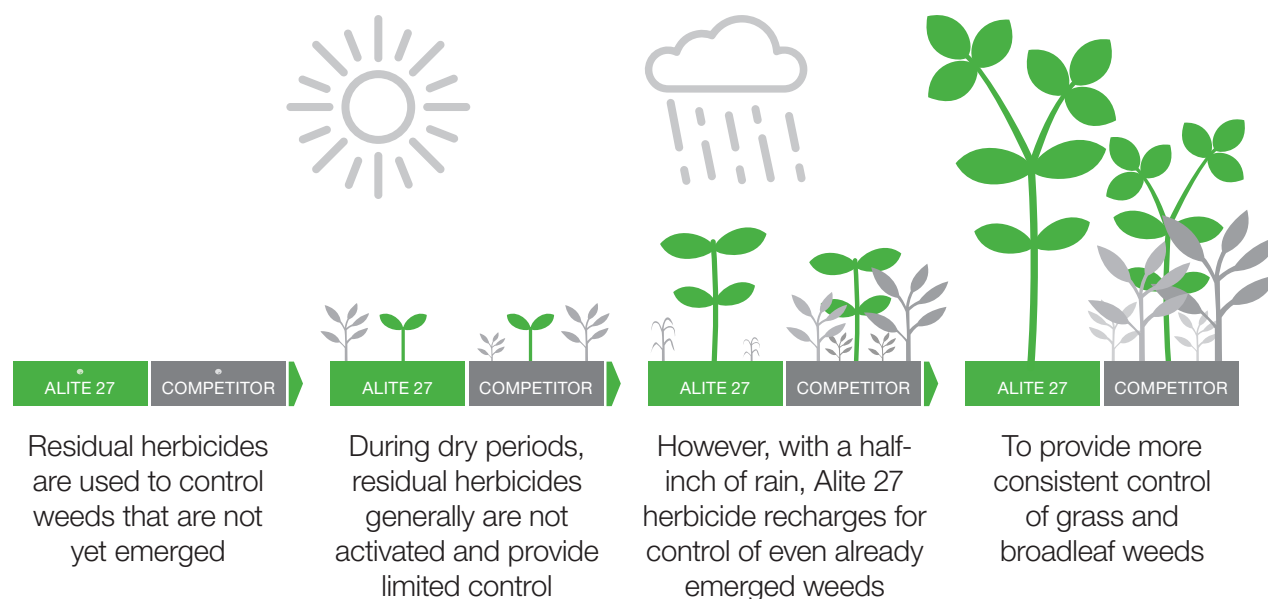
- **RECHARGE** on emerged weeds
- **RESIDUAL** consistency and spectrum on broadleaves and grasses
- **RESISTANCE MANAGEMENT** with a new SOA to soybeans

When used as a tank-mix partner with complementary residual herbicides, such as Zidua® PRO herbicide or Zidua SC herbicide, Alite 27 herbicide delivers consistent control on tough weeds like Palmer amaranth, waterhemp, marehail and kochia.*

*For a full-season herbicide program, follow a preemergence application of Alite 27 herbicide with a postemergence application of Liberty® herbicide, as outlined in the Program Recommendation on page 4.

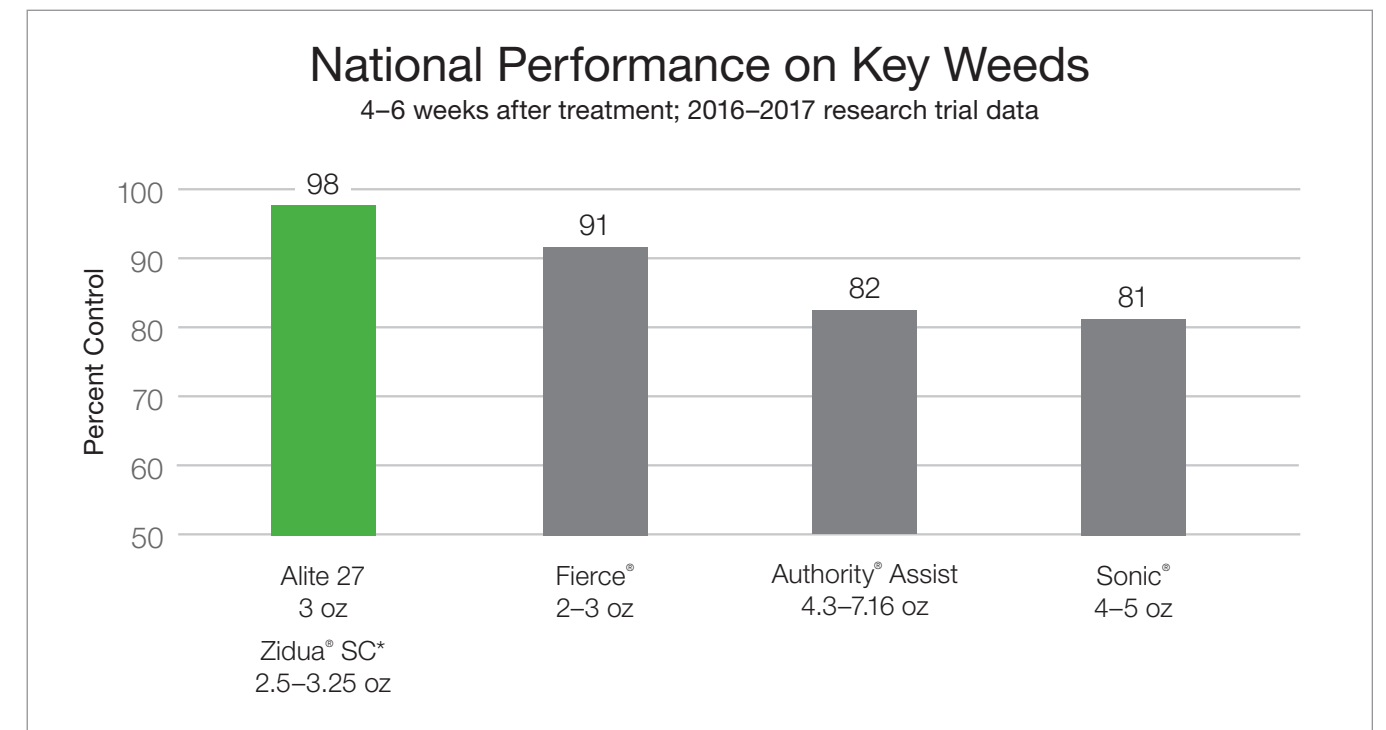
A Residual With Recharge

Alite 27 herbicide recharges with just a half-inch of water, to provide better control of weeds that emerge prior to herbicide activation. When other herbicides typically stop working, Alite 27 herbicide recharges to control up to 3-inch weeds, with greater consistency of grass and broadleaf control in LibertyLink GT27 soybeans.



Residual Consistency

Your residual herbicide should be consistent across a broad spectrum of weeds — from grasses to small-seeded broadleaves like waterhemp and Palmer amaranth, to large-seeded broadleaves like giant ragweed — across a variety of weather patterns. Adding Alite™ 27 herbicide to your preemergence program provides more consistent performance.



Weeds Included (n=39): Common Ragweed, Palmer Amaranth, Pigweed, Redroot Pigweed, Velvetleaf, Waterhemp
Trial Locations (n=19): AR, IA, IL, IN, KS, MD, MN, MO, MS, ND, NE, OH, TN, WI

Resistance Management

Adding Alite 27 herbicide to your preemergence program makes it 83 times less likely for your acres to develop herbicide resistance to tough-to-control weeds. It can be used as a tank-mix partner with Zidua PRO or Zidua SC herbicides to provide better consistency and resistance management.

Evans, JA, et al., Pest Management Science 2016 Jan; 72(1): 74-80.

83

times less likely to develop resistance

LibertyLink® GT27™ Program Recommendation

	BASE RECOMMENDATION	HEAVY PRESSURE RECOMMENDATION
PREEMERGENCE APPLICATION	Alite™ 27* 2–3 oz/A** + Zidua® SC 2.5–3.25 oz/A	Alite 27* 2–3 oz/A** + Zidua PRO 4.5–6 oz/A
POSTEMERGENCE APPLICATION	Liberty® 32 fl oz/A + Outlook® 10–12 oz/A	Liberty 32 fl oz/A + Outlook 10–12 oz/A + Glyphosate 22–32 oz/A
SITES OF ACTION	3 Sites of Action	6 Sites of Action

*Alite 27 herbicide is only available for use in labeled counties. Refer to alite27herbicide.com for more information.

**Use rate may vary by soil type and organic matter. Refer to Alite 27 herbicide product label for more information.

Industry-Leading Giant Ragweed Control

7/18/2019 35 Days After Treatment Prior to Liberty Herbicide Application

Primary Weed: Giant Ragweed



BASF Field Study, 2019, Belleview, IL.



BASF Field Study, 2019, Belleview, IL.

BASF
We create chemistry

To learn more about where Alite 27 herbicide is available for use and application requirements, visit alite27herbicide.com

Alite 27 is a Restricted Use Pesticide.

Always read and follow label directions.

LibertyLink GT27 is tolerant to Alite 27 herbicide, an HPPD herbicide. Other HPPD herbicides are not for use with LibertyLink GT27 and may result in significant crop injury. Alite 27 is only available for use in labeled counties.

Liberty, LibertyLink, Outlook and Zidua are registered trademarks and Alite is a trademark of BASF. GT27 is a trademark of MS Technologies. Fierce is a registered trademark of Valent U.S.A. LLC. Authority Assist is a registered trademark of Syngenta Group. Sonic is a registered trademark of Dow AgroSciences, DuPont or Pioneer and their affiliated companies or respective owners. Not all products are registered in all states. © 2020 BASF Corporation. All rights reserved.

20BASF0401ALITE0462