

Zampro®

Fungicide

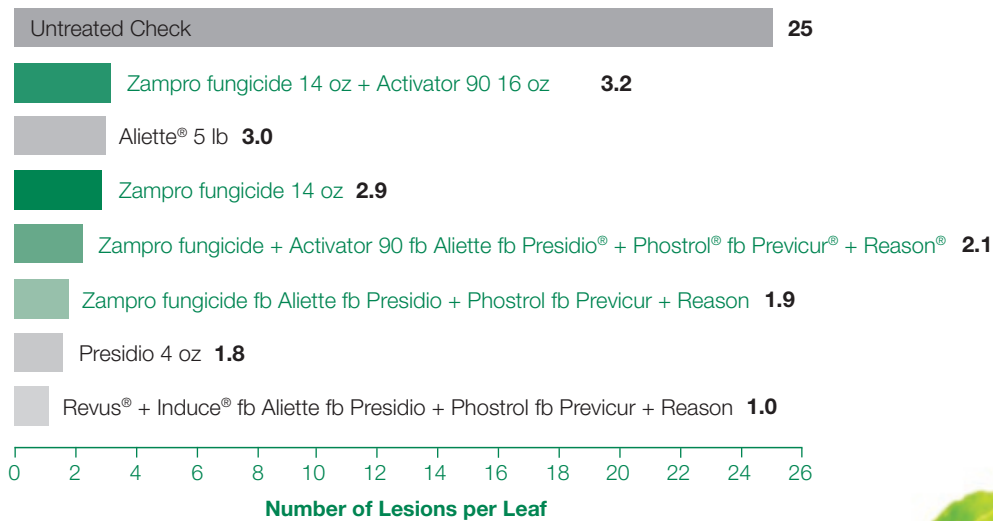
Advanced Control for Leafy and Brassica Vegetables

Benefits of Zampro® Fungicide

- Highly effective Phytophthora (including late blight) and downy mildew control
- Two modes of action that are highly effective on oomycetes
- Excellent protection when applied preventatively

Zampro fungicide provides more consistent performance for maximum disease control and crop potential.

Downy Mildew Control – Lettuce



Application dates: April 29, May 5, May 11, May 20.

Randomized complete block, 4 reps. Plot size 2, 40 inch beds x 20 ft. 65 gpa.

Plots were rated on May 31. Evaluations consist of eight plants randomly taken from each plot from the inside two rows of each bed. Mean number of lesions from 40 plants.

Downy Mildew Control – Lettuce



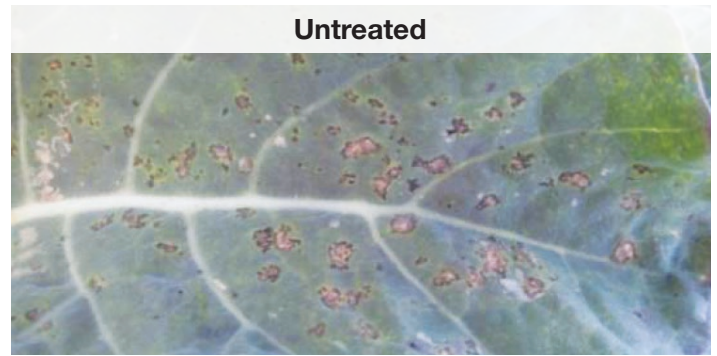
Untreated



Zampro® Fungicide 14 oz

BASF Research Trial, Lettuce, CA, 2010.

Downy Mildew Control – Broccoli



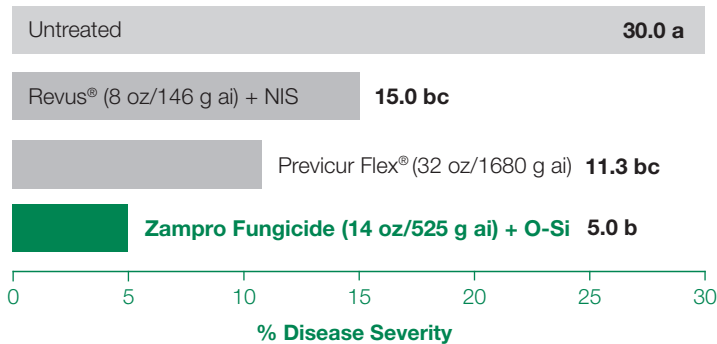
Untreated



Zampro® Fungicide 14 oz

BASF Research Trial, Broccoli, CA, 2010.

Downy Mildew Control – Lettuce

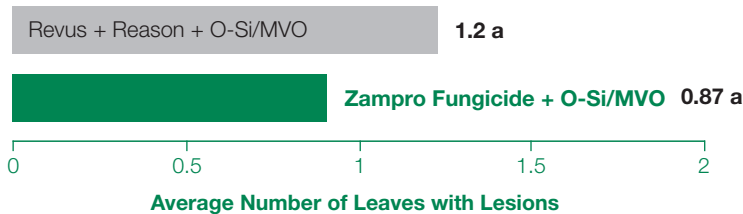


BASF Research Trial, Lettuce, CA, 2009.

Best Use Recommendations

- For best results, apply Zampro fungicide prior to infection
- Use Rate: 14 fl. oz/A
- PHI: 0 days–leafy greens; 7 days–head and stem
- REI: 12 hours
- Spray Interval: 7 days
- Addition of a spreading/penetrating adjuvant recommended

Downy Mildew Control – Romaine Lettuce



BASF Research Trial, Romaine lettuce, CA, 2011.



Always read and follow label directions.

Zampro is a registered trademark of BASF Corporation. Alette, Previcur Flex and Reason are registered trademarks of Bayer CropScience. Activator is a registered trademark of Loveland Products. Presidio is a registered trademark of Valent. Phostrol is a registered trademark of Nufarm US. Revus is a registered trademark of Syngenta Crop Protection, LLC. Induce is a registered trademark of Helena Chemical Company.
©2014 BASF Corporation. All Rights Reserved. APN# 1407005 Zampro-Leafy Vegetables

Zampro®
Fungicide

BASF
The Chemical Company