



ILEVO®

Seed Treatment

BASF

We create chemistry

ILEVO® Seed Treatment: Proven Protection Against Soybean's Top Pest

Soybean Cyst Nematode (SCN) is the Most Damaging Soybean Pest, Stealing Over \$1 Billion per Year

SCN Steals More Yield Than Seedling Diseases, SDS, and White Mold Combined



Over **100 million** bushels lost to SCN yearly*



5.1 bu/A estimated yield loss, leading to over **\$70,000 loss** revenue**

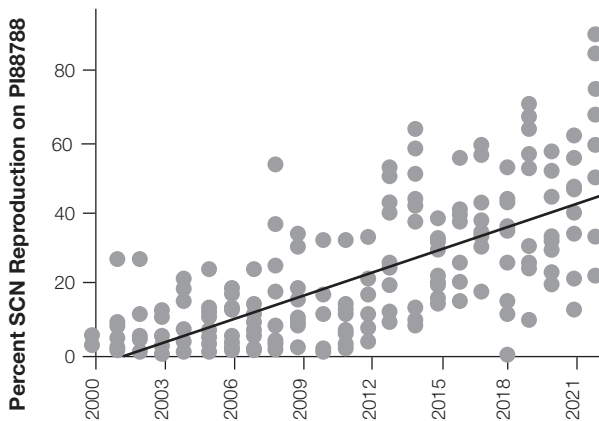
*Crop Protection Network. Soybean Disease Loss Estimates from the United States and Ontario, Canada 2015-2021. SCN Coalition Grower Survey, 2020.

**Estimated revenue loss for 1,000 A soybean grower at \$14.00/bu.

SCN is Adapting and Able to Overcome Main SCN-Resistant Gene (PI88788)

Efficacy of PI88788 is declining and leading to higher populations

Development of PI88788 Virulence

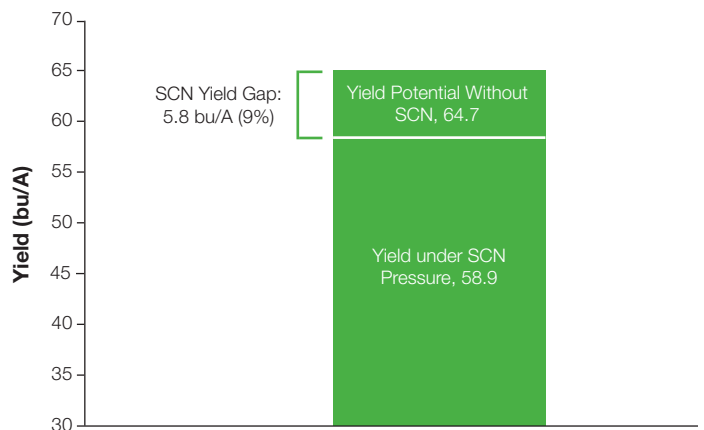


Each data point represents the SCN population in a field in which a variety trial field experiment was conducted

McCarville et al. 2017. Plant Health Progress; SCN Coalition and Greg Tylka et. al. ISU Extension publications (2016-2022 data), Iowa State University.

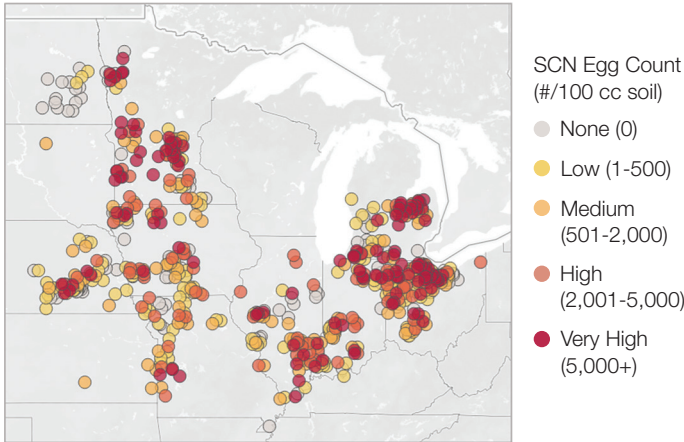
Loss in SCN efficacy is decreasing yield potentials and widening the yield gap

SCN Yield Loss Gap Due to PI88788 Virulence



SCN is Widespread, Impacting a Majority of Soybean Acres and Threatening Yield Potentials

SCN Was Detected in 77% of Sampled Fields

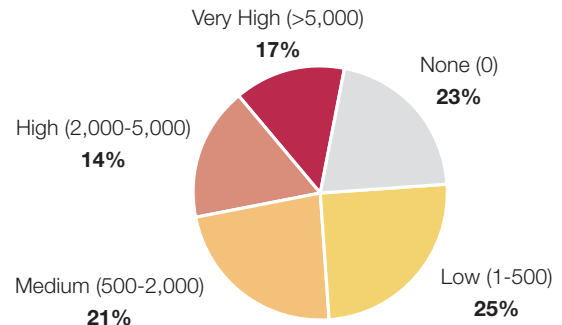


BASF SCN Sampling Projects. 2021-2022. (748 total samples)

Damaging Levels of SCN are Widespread

More than half of samples have damaging levels of SCN (2,655 average egg count per 100 cc soil)

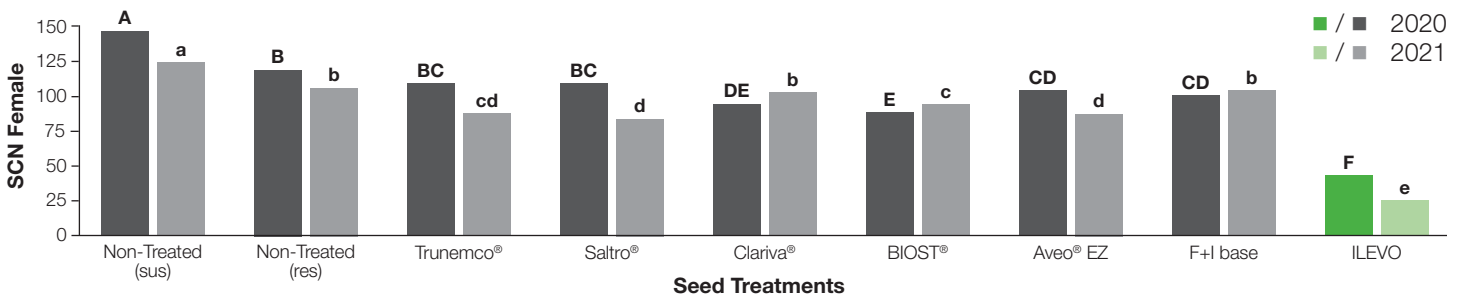
Egg Count (#/100 cc)



ILEVO Seed Treatment is a Powerful Nematicide to Protect Soybean Yield Potentials

ILEVO Dramatically Outperforms Competitors to Reduce SCN Infection on Root

Seed Treatment Efficacy Against Soybean Cyst Nematode



University of Missouri, Kaitlyn Bissonnette and Jeff Barizon, manuscript in prep.

ILEVO Delivers Proven Results Growers Rely on, Year Over Year

ILEVO®
Seed Treatment
vs. Saltro
(n=80)

+1.3
bu/A

79%
wins

ILEVO®
Seed Treatment
vs. F&I base
(n=67)

+4.6
bu/A

90%
wins

Tested on farm in the presence of varying levels of SDS and nematodes in IA, IL, NE, MI, MN, IN, MO, OH and KY in 2020, 2021 & 2022.

For more information, visit www.agproducts.basf.us

Always read and follow label directions.